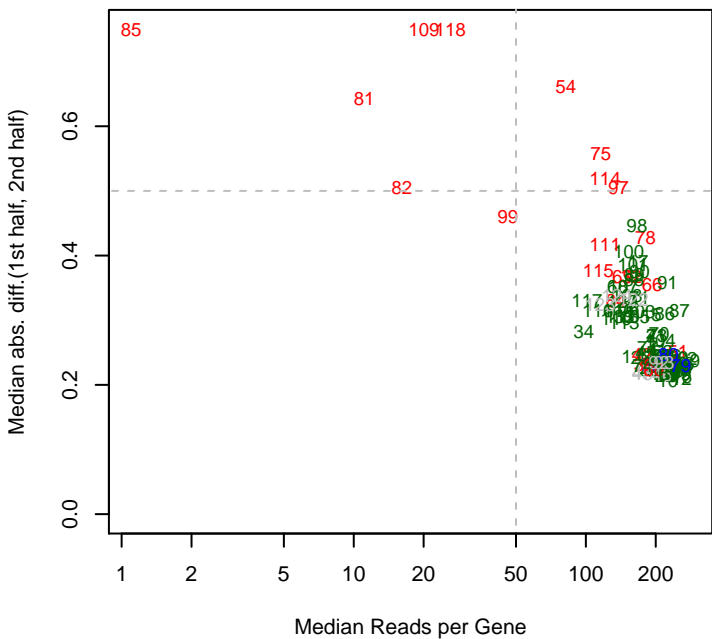
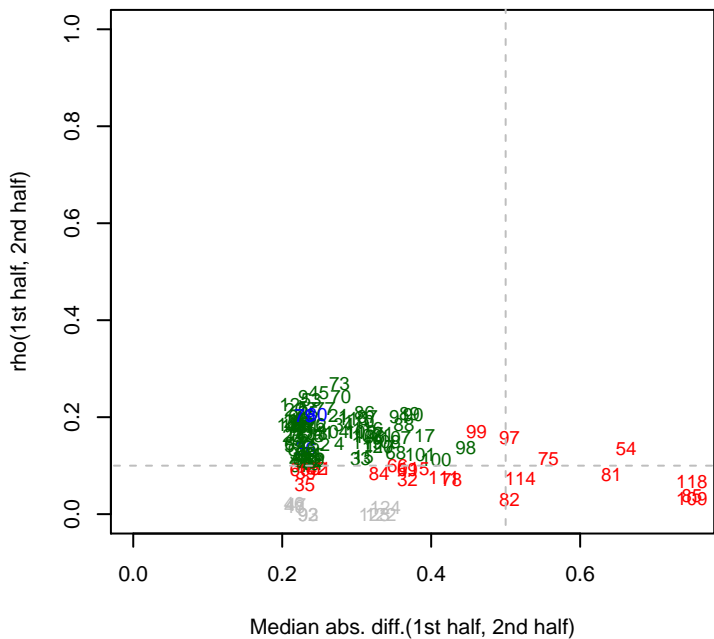
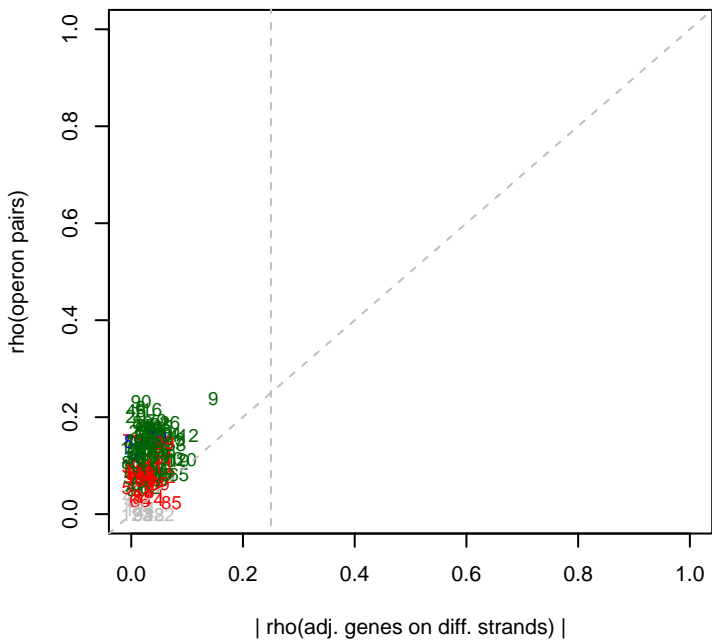
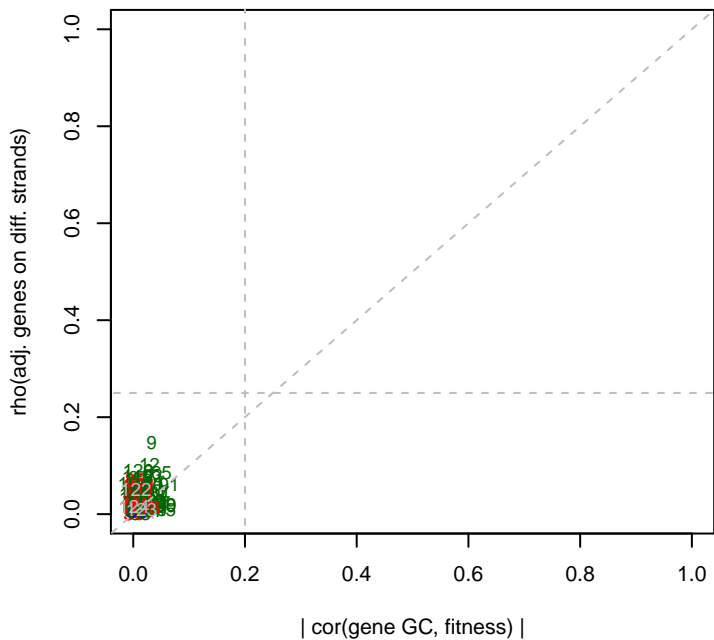
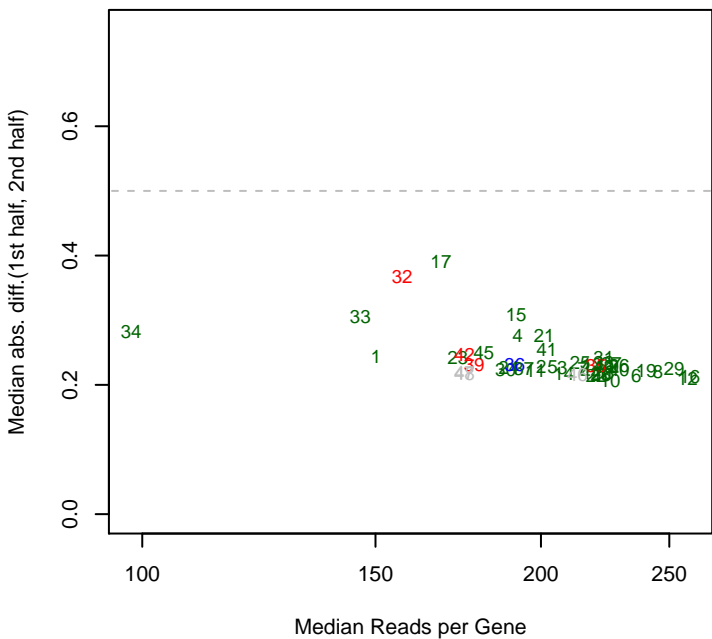
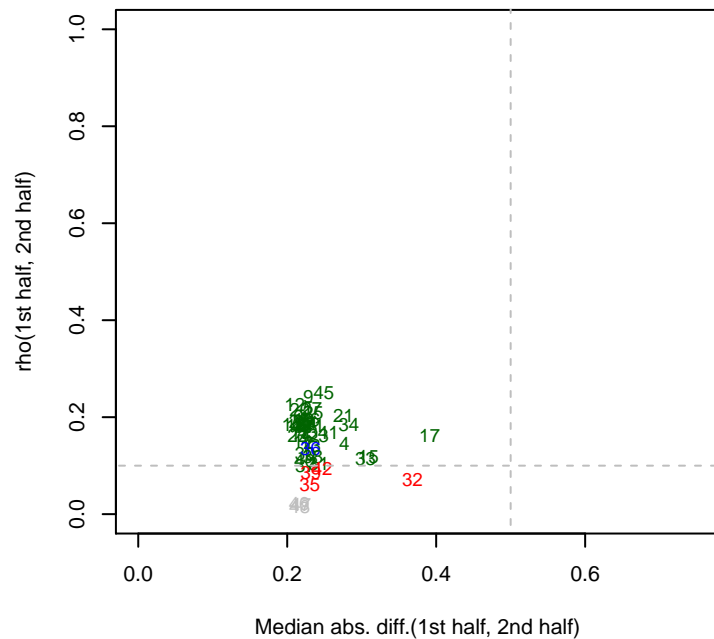


BFirm mad12**BFirm rho12****BFirm rho(operons)****BFirm GC effects**

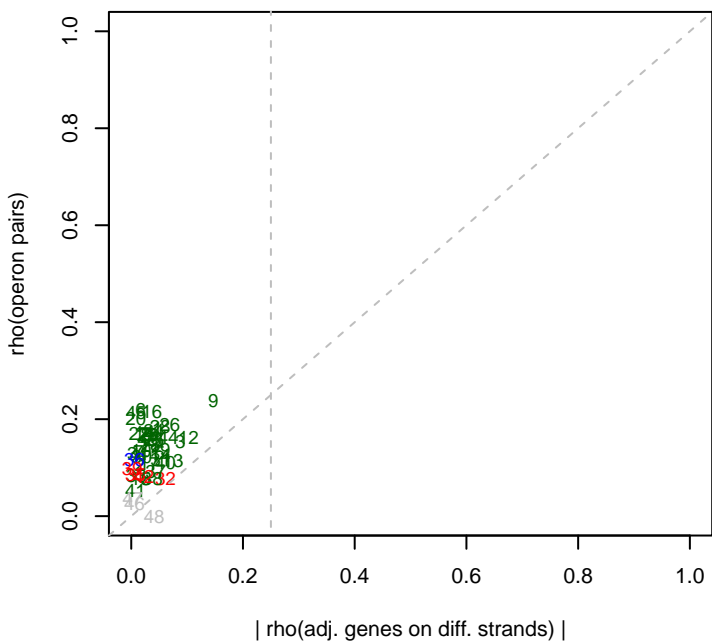
6/2/2015 BFirm_ML3_set1 mad12



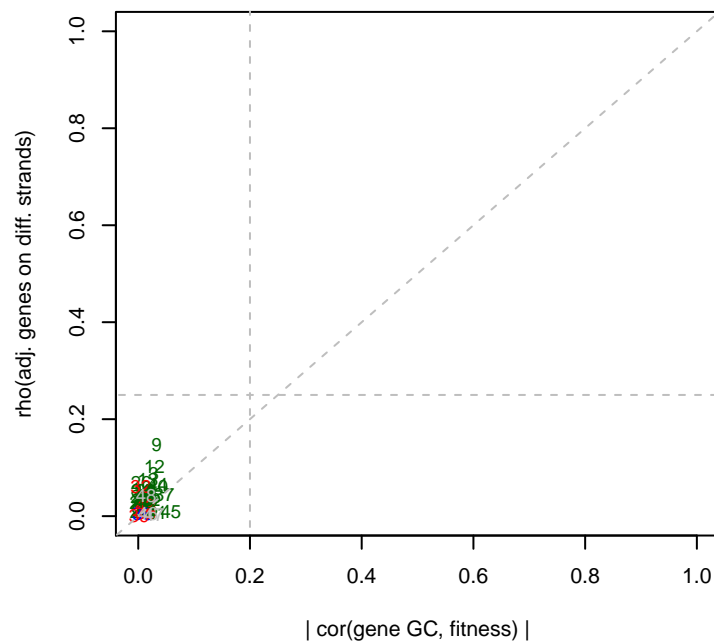
6/2/2015 BFirm_ML3_set1 rho12



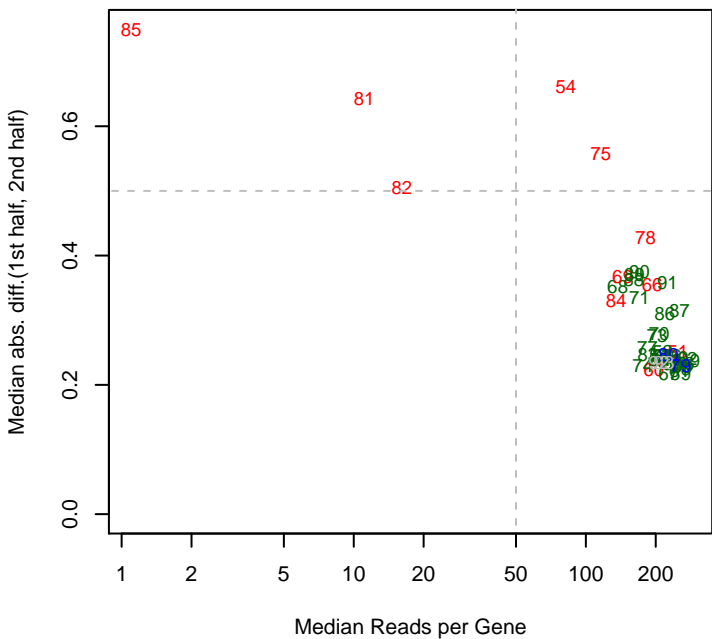
6/2/2015 BFirm_ML3_set1 rho(operons)



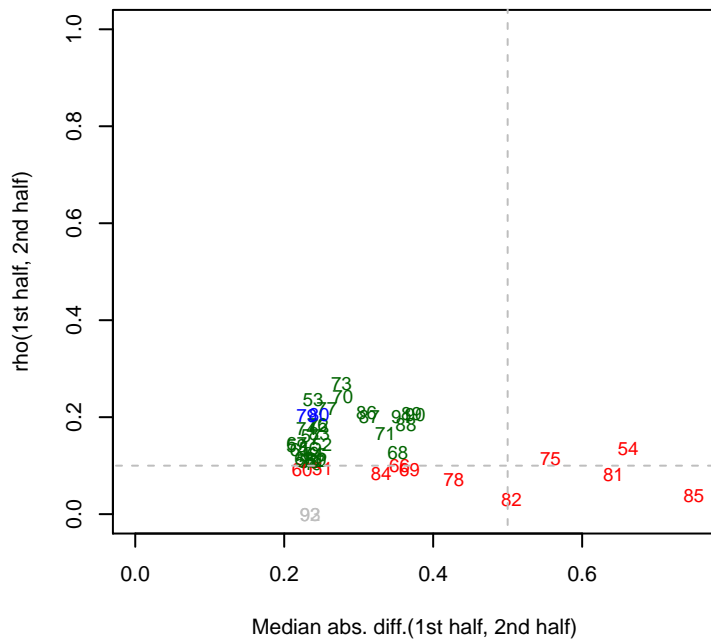
6/2/2015 BFirm_ML3_set1 GC effects



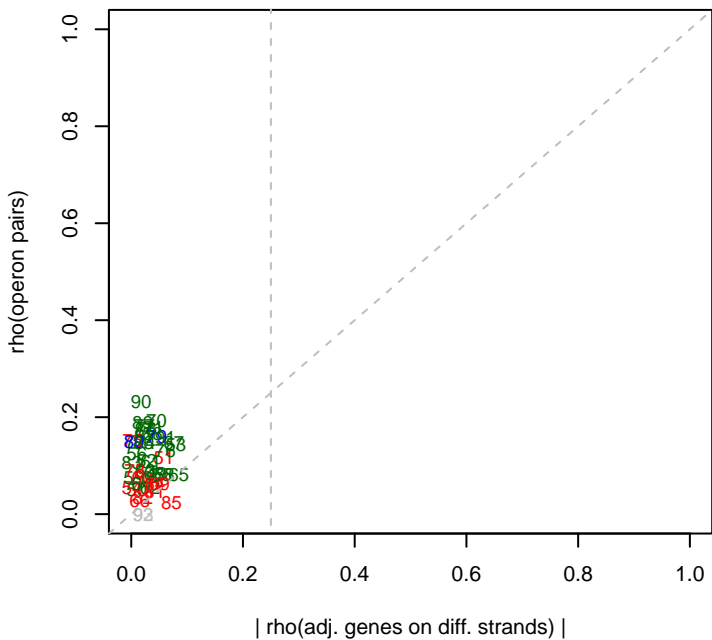
6/2/2015 BFirm_ML3_set2 mad12



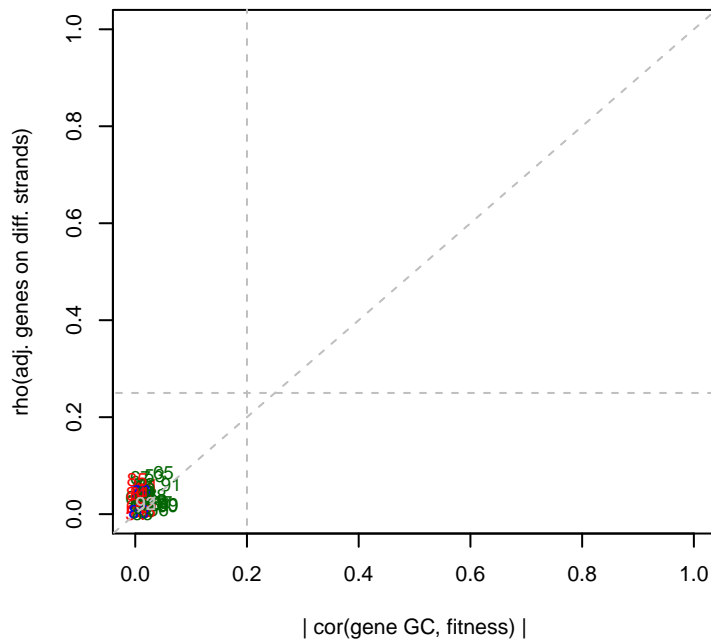
6/2/2015 BFirm_ML3_set2 rho12



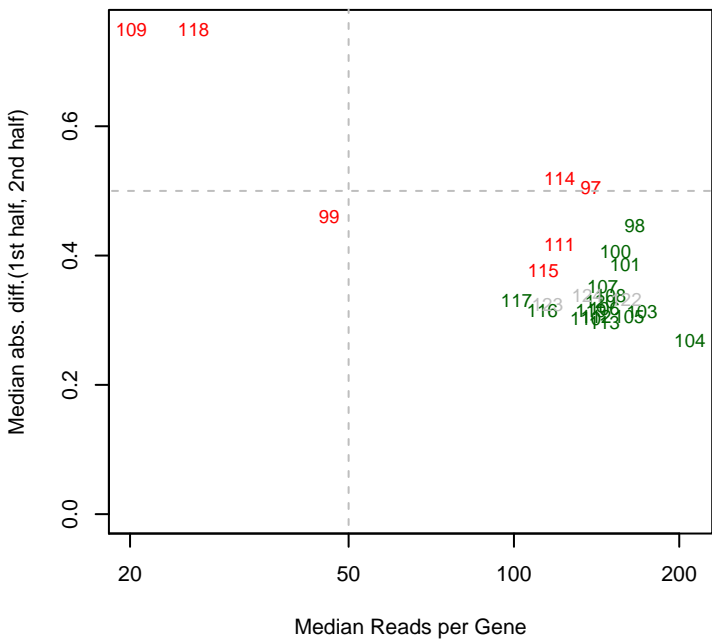
6/2/2015 BFirm_ML3_set2 rho(operons)



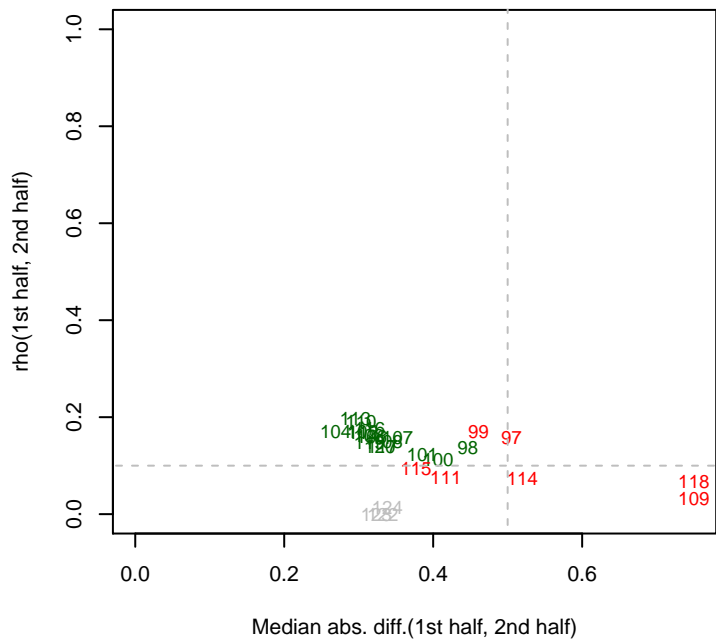
6/2/2015 BFirm_ML3_set2 GC effects



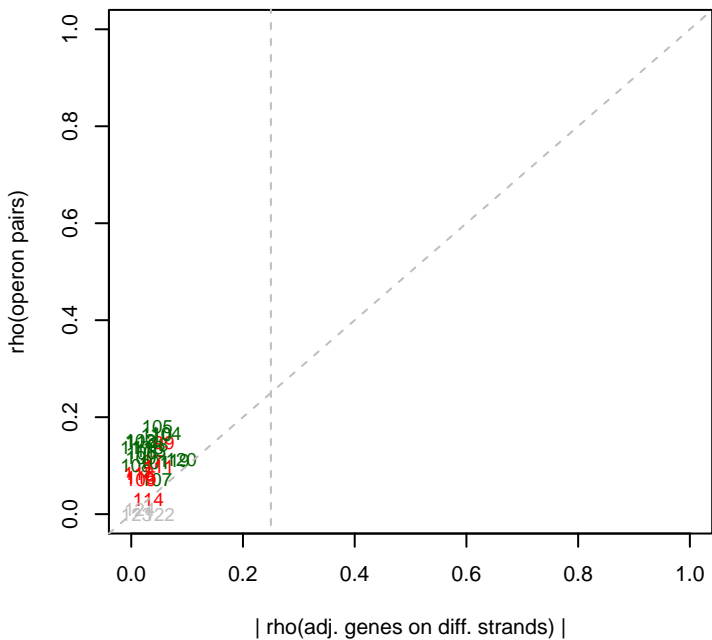
1/27/2016 BFirm_ML3_set3 mad12



1/27/2016 BFirm_ML3_set3 rho12



1/27/2016 BFirm_ML3_set3 rho(operons)



1/27/2016 BFirm_ML3_set3 GC effects

